



IF YOU'RE AN ADULT LIVING WITH SCHIZOPHRENIA,

THERE WAS A TIME WHEN THIS SEEMED OUT OF REACH.

WITH PERSERIS, IT'S A REAL POSSIBILITY.

Individuals depicted are models
used for illustrative purposes only.

INDICATION

PERSERIS® (risperidone) for extended-release injectable suspension, for subcutaneous use, is a prescription medicine used to treat schizophrenia in adults.

IMPORTANT SAFETY INFORMATION

What is the most important information I should know about PERSERIS?

Drugs like PERSERIS that are used to treat schizophrenia can cause serious side effects, including an increased risk of death in elderly people who are confused, have memory loss, and have lost touch with reality (dementia-related psychosis). PERSERIS is not approved to treat dementia-related psychosis.

See additional Important Safety Information throughout brochure and accompanying **full Prescribing Information, including BOXED WARNING.**



once-monthly

PERSERIS®
(risperidone)

for extended-release
injectable suspension

90 mg · 120 mg

DISCOVER PERSERIS

A once-monthly treatment that helps control the symptoms of schizophrenia in adults

PERSERIS® (risperidone) is an injection given by a healthcare provider. If you are new to risperidone, your healthcare provider will give you a small oral dose to test for side effects prior to treatment. Some patients, depending on their current risperidone dose, may not be candidates for PERSERIS.



IMPORTANT SAFETY INFORMATION (CONT.)

Do not receive PERSERIS if you are allergic to risperidone, paliperidone, or any of its components. Allergic reactions, including swelling of the face, mouth, lips, and tongue, have been reported in some patients treated with risperidone.

PERSERIS may cause serious side effects, including:

- **Stroke in elderly people (cerebrovascular problems) that can lead to death.**
- **Neuroleptic Malignant Syndrome (NMS). NMS is a rare but very serious problem that can lead to death. Seek medical attention right away** if you have any of these symptoms: high fever, severe muscle stiffness, confusion, sweating, irregular heartbeat, fast heart rate, or changes in your blood pressure.
- **Uncontrolled facial or body movements (tardive dyskinesia)** that may not go away, even if you stop receiving PERSERIS. Tardive dyskinesia may also start after you stop receiving PERSERIS. Contact your healthcare provider if these movements occur.

PERSERIS has been shown in a clinical study to reduce the symptoms of schizophrenia in adults

It's good to know that PERSERIS:

- Is **given once a month*** at your healthcare provider's office
- Delivers medicine **within hours on Day 1**
- Keeps delivering medicine **throughout the month**
- In a clinical study, patients taking PERSERIS showed **significant symptom improvement** after 8 weeks
- **Doesn't require taking a daily oral pill** (no supplemental dose) for your schizophrenia*

*If you are new to risperidone, your healthcare provider will give you a small oral dose to test for side effects prior to treatment.

It takes a lot of courage to manage the symptoms of schizophrenia.

Schizophrenia is a medical condition that can affect how a person thinks, feels, and behaves. The symptoms of schizophrenia can make everyday activities a challenge, but these symptoms can be managed with treatment.


The symptoms of schizophrenia may get better or worse at different times. That's why it's important to work with your healthcare provider to monitor your symptoms and make sure your treatment is still right for you.

Discuss the potential risks of treatment with PERSERIS with your healthcare provider. See Important Safety Information below.

IMPORTANT SAFETY INFORMATION (CONT.)

- **Problems with your metabolism** that may include high blood sugar (hyperglycemia), diabetes mellitus, changes in the fat levels in your blood (dyslipidemia), and weight gain. Extremely high blood sugar can lead to coma or death. If you have diabetes or are at risk for diabetes (e.g., obesity, family history of diabetes), your healthcare provider should check your blood sugar before you start PERSERIS and during treatment. Call your healthcare provider if you have symptoms of high blood sugar including: feeling very thirsty or hungry, sick to your stomach, weak or tired, or confused; needing to urinate more than usual; or your breath smells fruity.

See additional Important Safety Information throughout brochure and accompanying **full Prescribing Information, including BOXED WARNING.**

 **once-monthly**
PERSERIS®
(risperidone)
for extended-release
injectable suspension
90 mg · 120 mg



What could once-monthly PERSERIS mean for you?

- **Reduction of your schizophrenia symptoms** — PERSERIS® (risperidone) has been clinically shown to reduce the symptoms of schizophrenia in adults.
- **No need to keep taking a daily schizophrenia medication** — PERSERIS is a once-monthly extended-release treatment. This means the medicine is gradually released in your body throughout the month.
- **PERSERIS is given by injection by a healthcare provider** — If you are new to risperidone, your healthcare provider will give you a small oral dose to test for side effects prior to treatment. Some patients, depending on their current risperidone dose, may not be candidates for PERSERIS.
- **Staying on track with your schizophrenia medication** — If you have trouble taking, or remembering to take, daily medication for your schizophrenia, once-monthly PERSERIS may help you stay on schedule with your treatment.

IMPORTANT SAFETY INFORMATION (CONT.)

PERSERIS may cause serious side effects, including:

- **High level of prolactin in your blood.** PERSERIS may cause a rise in the blood levels of a hormone called prolactin that may cause side effects including missed menstrual periods, decreased fertility in women, leakage of milk from the breasts, development of breasts in men, or problems with erection.
- **Decreased blood pressure (orthostatic hypotension) and fainting.** You may feel lightheaded or faint when you rise too quickly from a sitting or lying position, especially when PERSERIS is started, re-started, or the dose is increased.
- **Falls.** Antipsychotic medicines like PERSERIS may cause drowsiness or dizziness when you are standing, which could increase your risk for falls and related injuries.

Find out what **PERSERIS** can make possible

Considering, or starting, a new treatment plan may bring up a lot of emotions. Some people may be excited, while others may not like the idea of change.

If you have struggled to manage your schizophrenia symptoms, it might be time to discuss your medications with your healthcare provider. If your healthcare provider prescribes PERSERIS, he or she will choose the appropriate dose for you and will continue to monitor you throughout your treatment.

Discuss the potential risks of treatment with PERSERIS with your healthcare provider. See Important Safety Information below.

IMPORTANT SAFETY INFORMATION (CONT.)

- **Low white blood cell count.** Your healthcare provider may monitor your blood cell counts during treatment with PERSERIS.
- **Problems thinking clearly and moving your body.** Do not drive, operate machinery, or do other dangerous activities until you know how PERSERIS affects you.
- **Seizures (convulsions).**
- **Difficulty swallowing that can cause food or liquid to get into your lungs.**

See additional Important Safety Information throughout brochure and accompanying **full Prescribing Information, including BOXED WARNING.**



once-monthly
PERSERIS[®]
(risperidone)
for extended-release
injectable suspension
90 mg • 120 mg



Working together with your Treatment Team

Whether you have one healthcare professional helping you or a whole team behind you, it's important to know they're on your side.

- Psychiatrists
- Psychologists
- Physician Assistants
- Nurse Practitioners
- Nurses
- Case Managers
- Social Workers
- Occupational Therapists

Remember, along with effective medication, a treatment plan should include **counseling and support**. Work with the members of your Treatment Team to find a plan that can help you discover what is possible with PERSERIS® (risperidone).

IMPORTANT SAFETY INFORMATION (CONT.)

PERSERIS may cause serious side effects, including:

- **Prolonged or painful erection lasting more than 4 hours.** Call your healthcare provider or go to your nearest emergency room right away if you have an erection that lasts more than 4 hours.
- **Problems with control of your body temperature (too high or too low). Avoid getting overheated or dehydrated.**

The most common side effects of PERSERIS include weight gain; constipation; drowsiness; pain in arms, legs, back, or muscles; restlessness; feeling excessive worry or nervousness; and pain or redness at the injection site. These are not all the possible side effects of PERSERIS. Tell your healthcare provider if you have any side effect that bothers you or does not go away. For more information, ask your healthcare provider or pharmacist.



How caregivers can help

A caregiver is a special member of your team and can be a relative, trusted friend, or healthcare professional.

They can help you work toward your treatment goals by scheduling and going with you to your appointments, communicating with other members of your team, and helping you stay on track with your schizophrenia medication. They can also help you with your daily errands or activities.

By offering both emotional and practical support, caregivers can help you manage both the day-to-day and the long-term challenges of living with schizophrenia.

Discuss the potential risks of treatment with PERSERIS with your healthcare provider. See Important Safety Information below.


IMPORTANT SAFETY INFORMATION (CONT.)

Do not drink alcohol during treatment with PERSERIS.

Before receiving PERSERIS, tell your healthcare provider about all your medical conditions, including if you:

- have had Neuroleptic Malignant Syndrome.

See additional Important Safety Information throughout brochure and accompanying **full Prescribing Information, including BOXED WARNING.**

 **once-monthly**
PERSERIS[®]
(risperidone)
for extended-release
injectable suspension
90 mg · 120 mg

Looking ahead to your PERSERIS appointment

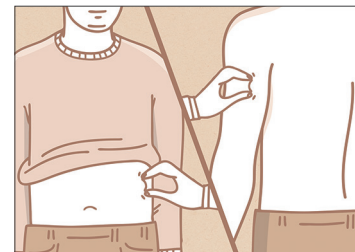
If you're prescribed PERSERIS® (risperidone), you'll receive a PERSERIS injection once a month by a healthcare provider. Each monthly injection gives you a dose of medicine to help you control your schizophrenia all month long.

PERSERIS is an injection given by a healthcare provider. If you are new to risperidone, your healthcare provider will give you a small oral dose to test for side effects prior to treatment. Some patients, depending on their current risperidone dose, may not be candidates for PERSERIS.

Here's what your visit may be like:



On the day of your appointment, your healthcare provider may talk about your treatment and how you are doing. If you have any concerns or questions about your treatment, share them.

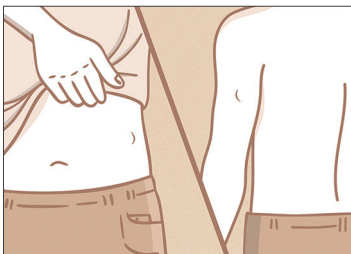


Your dose of **PERSERIS** will be given by an injection under the skin in your abdominal area or the back of your upper arm. Your healthcare provider may pinch a little bit of your skin in order to give you your injection.

IMPORTANT SAFETY INFORMATION (CONT.)

Before receiving PERSERIS, tell your healthcare provider about all your medical conditions, including if you:

- have or have had uncontrolled movements of your tongue, face, mouth, or jaw (tardive dyskinesia).
- have diabetes or have a family history of diabetes.
- have had dizziness or fainting or are being treated for high blood pressure.
- have had a low white blood cell count.
- have or have had seizures or epilepsy.
- are pregnant or plan to become pregnant during treatment with PERSERIS. It is not known if PERSERIS will harm your unborn baby.



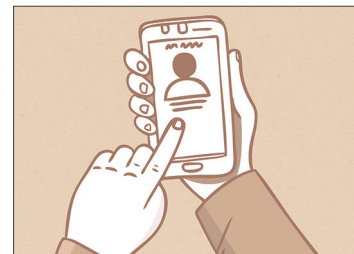
You may feel a small bump at the spot where the medication is given. This bump, which healthcare providers sometimes call a “depot” (DEE-poh), will decrease in size as the medication is released over the month.



It is important not to rub or massage the injection site. Be aware of the placement of any belt, waistband, sleeve, or other clothing that may rub the injection site.



Before leaving your healthcare provider's office, make sure to schedule your next month's injection of PERSERIS.



Call your healthcare provider if you have any reactions or side effects.

IMPORTANT SAFETY INFORMATION (CONT.)

Use of PERSERIS during the third trimester of pregnancy may cause side effects in the newborn infant, including agitation, abnormal muscle tone, tremor, drowsiness, difficulty feeding, and difficulty breathing. Seek medical attention if you notice these signs. If you become pregnant during treatment with PERSERIS, talk to your healthcare provider about registering with the National Pregnancy Registry for Atypical Antipsychotics, or call **1-866-961-2388** or visit <http://womensmentalhealth.org/clinical-and-research-programs/pregnancyregistry/>.

See additional Important Safety Information throughout brochure and accompanying **full Prescribing Information, including BOXED WARNING.**

once-monthly
PERSERIS[®]
(risperidone)
for extended-release
injectable suspension
90 mg • 120 mg

Notes and reminders

Use the space below to jot down questions you may have for your healthcare provider, and don't forget to make a note of your next appointment.

Appointment Date: ____/____/____ Time: ____ : ____ AM/PM
(DAY/MONTH)

IMPORTANT SAFETY INFORMATION (CONT.)

Before receiving PERSERIS, tell your healthcare provider about all your medical conditions, including if you:

- are breastfeeding or plan to breastfeed. If you are receiving PERSERIS and are breastfeeding, monitor your infant for sleepiness, inadequate weight gain, jitteriness, tremors, and abnormal muscle movements. Seek medical care if you notice these signs.
- have or have had kidney or liver problems.
- have Parkinson's Disease or dementia with Lewy Bodies

Tell your healthcare provider about all the medicines you take or plan to take, including prescription and over-the-counter medicines, vitamins, and herbal supplements. PERSERIS and other medicines may affect each other.

Helpful resources

In addition to your Treatment Team, there are groups and organizations you can turn to for information, education, and support, including:


- **National Alliance on Mental Illness (NAMI)** offers support for people with mental illness and their families and friends. nami.org
- **National Institute of Mental Health (NIMH)** is one of the leading scientific organizations focused on the understanding and treatment of mental illness. nimh.nih.gov
- **Substance Abuse and Mental Health Services Administration (SAMHSA)** is dedicated to reducing the impact of substance abuse and mental illness in America. samhsa.gov

IMPORTANT SAFETY INFORMATION (CONT.)

To report pregnancy or side effects associated with taking **PERSERIS**, please call 1-877-782-6966. You are encouraged to report side effects of prescription drugs to the FDA. Visit www.fda.gov/medwatch, or call 1-800-FDA-1088.

For more information about **PERSERIS** talk to your healthcare provider or visit www.perseris.com.

See additional Important Safety Information throughout brochure and accompanying **full Prescribing Information, including BOXED WARNING.**



once-monthly
PERSERIS[®]
(risperidone)
for extended-release
injectable suspension
90 mg • 120 mg

LEARN MORE ABOUT

WHAT'S POSSIBLE AT [PERSERIS.COM](https://perseris.com)



PERSERIS is a registered trademark of Indivior UK Limited.

© 2023 Indivior UK Limited. | INDIVIOR is a registered trademark of Indivior UK Limited. | All rights reserved.

This material is intended solely for residents of the United States.

P-RAG-US-00560 Expiry February 2025



once-monthly

PERSERIS®
(risperidone)

for extended-release
injectable suspension

90 mg · 120 mg